

LanSchool and L-Series NComputing

LanSchool v7.2.0.3 fully supports the NComputing platforms.

NComputing X-Series

The X-Series platform allows a single computer to be shared with up to seven users. Up to 2 X-Series PCI cards are installed in the Host machine. LanSchool v7.2.0.0 fully supports this environment. After the software has been installed on all clients of the host, the host should be rebooted and all users should login again.

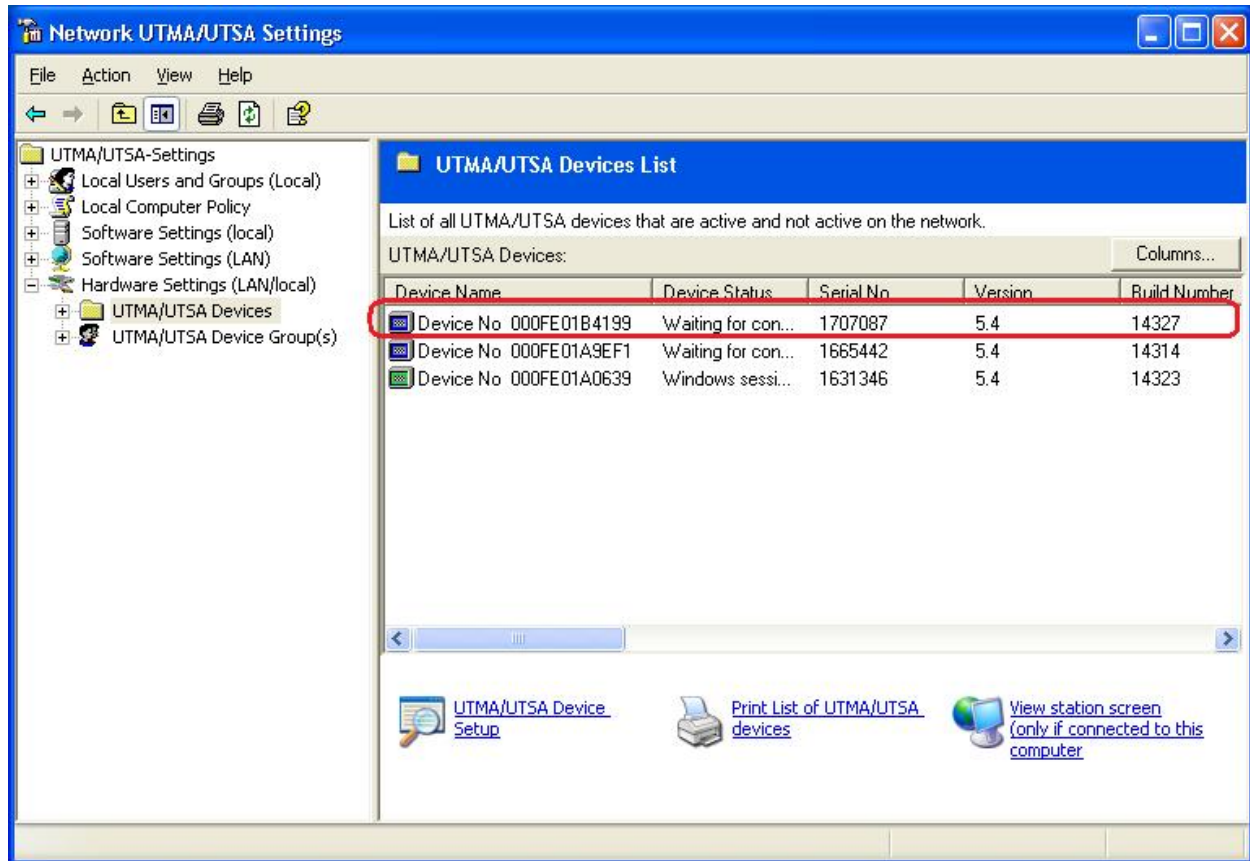
NComputing L-Series

The L-Series platform allows up to 30 users to share a single host computer. The client hardware is attached to the host via a standard Ethernet infrastructure. The NComputing software running on the host will assign "Session Numbers" to the client devices in the order they attach to the host. Because of this randomness, LanSchool cannot tell which client device should be a "Teacher" computer and which are "Student" computers. To overcome the lack of "location identification" inherent in the L-Series, an extra step is required before LanSchool is installed:

1. Create the file folder "C:\Program Files\LanSchool" on the host computer.
2. Copy the LSeries.bat file from the Utilites folder of the LanSchool CDROM or Download to this new folder.
3. Assign a unique "**LSeries Location Number**" to each L-Series client who will be running either LanSchool Student or LanSchool Teacher software.

Assigning an “L Series Location Number”

From the Host machine, run the NTC-2000-XP Console. Navigate to the UTMA/UTSA Devices folder.

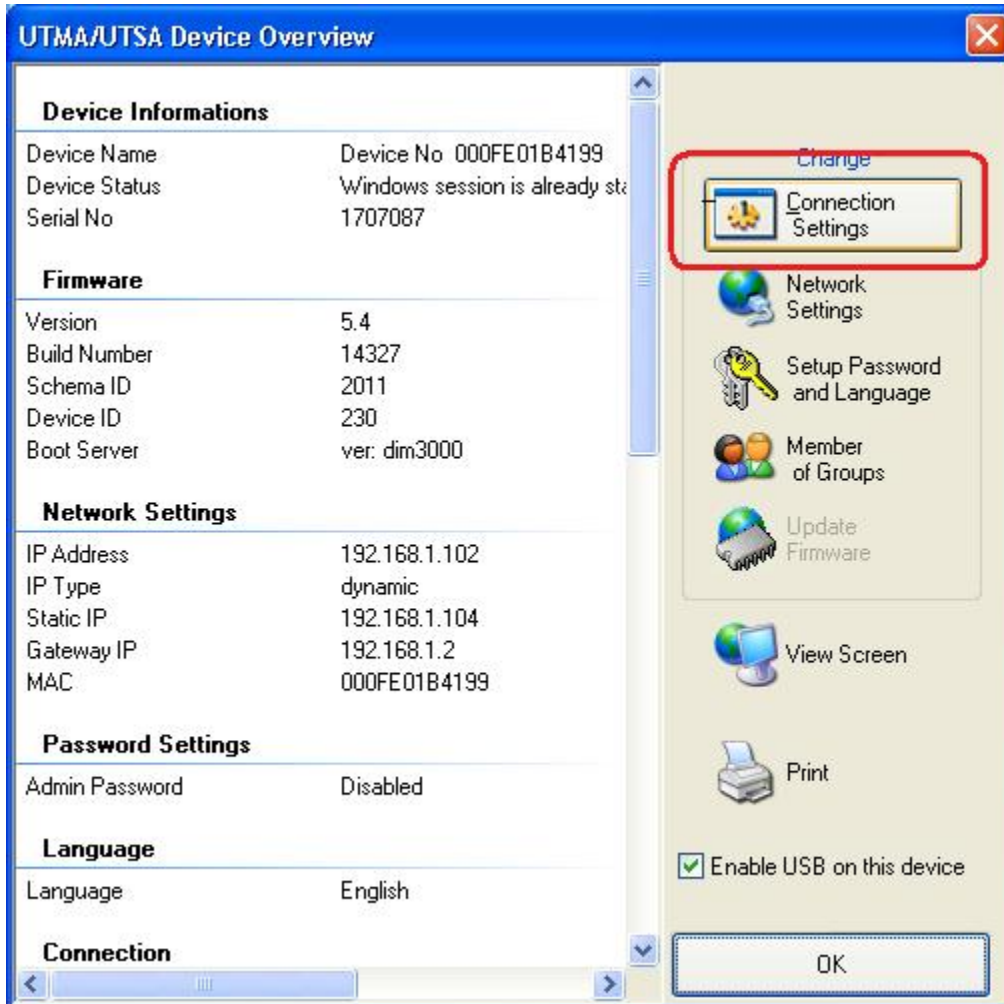


The screenshot shows the 'Network UTMA/UTSA Settings' application window. The left sidebar displays a tree view with 'UTMA/UTSA Devices' selected. The main pane, titled 'UTMA/UTSA Devices List', contains a table of active devices. The first row is highlighted with a red rectangle.

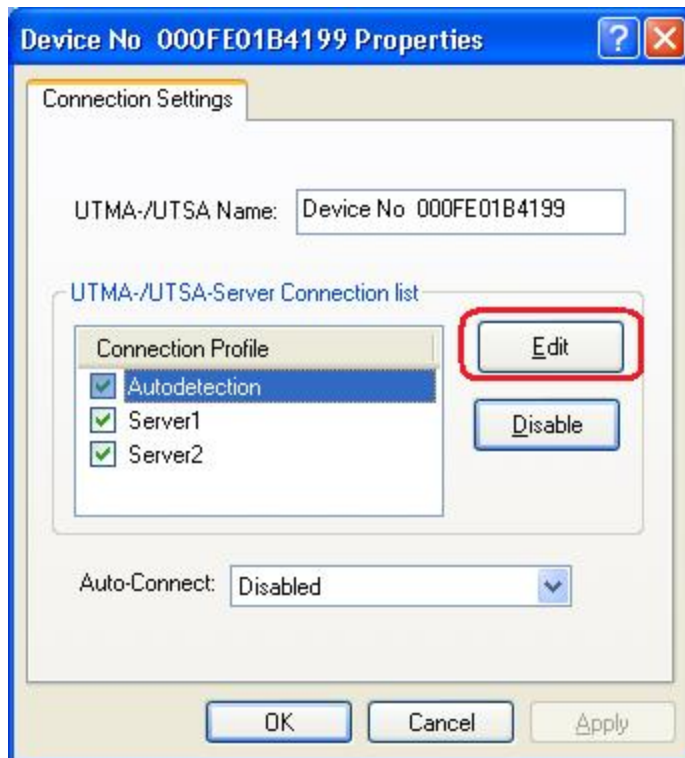
Device Name	Device Status	Serial No	Version	Build Number
Device No 000FE01B4199	Waiting for con...	1707087	5.4	14327
Device No 000FE01A9EF1	Waiting for con...	1665442	5.4	14314
Device No 000FE01A0639	Windows sessi...	1631346	5.4	14323

Below the table, there are three buttons: 'UTMA/UTSA Device Setup', 'Print List of UTMA/UTSA devices', and 'View station screen (only if connected to this computer)'.

Select a device and double-click it. (i.e. double click a device similar to the one outlined in red.) The Device Overview dialog will appear.



Click the "Connection Settings" button (outlined in red above) to bring up the Device Properties dialog.



Select the desired Connection Profile and click the “Edit” button (outlined in red above) to edit the Connection Profile.

The screenshot shows the "Edit Connection Profile" dialog box. The "Connection" field is set to "Autodetection". Under "Connection Settings", the terminal server network address is "will be detected automatically". The "User Name" and "Domain" fields are empty, and the "Password" field is also empty. The "Enable Autologon Mode" checkbox is unchecked. Under "Start Programs Settings", the "Start the following program" radio button is selected. The "Program" field contains "LSeries.bat 27" and the "Folder" field contains "c:\program files\lanschool\". The "UTMA/UTSA Video Mode Settings" section shows "Desktop Size" as "1024 x 768 x 24 bit" and "Use 75Hz VSYNC". The "OK" and "Cancel" buttons are at the bottom right.

Click on the “Start the following program” button and specify the LSeries.bat program. Add a unique number for this device (27 was used in the above example.) Every device in the classroom should have a unique number. Also specify the Folder to be “C:\Program Files\LanSchool\”. Click “OK” when finished. You will have to also click “OK” on several other dialogs on your way back to the original UTMA/UTSA Device List. Once there, you can select another device and repeat the above procedure until all devices which attach to the host have been assigned a unique name.

Once all L-Series devices have been assigned a unique name it’s a good idea to re-boot the Host to make sure that all L-Series devices will have to re-attach and will get their valid location number.

There is a utility in the Utilities folder of the LanSchool Download or CDROM called **LSeriesLocation.exe**. If you run that on an LSeries machine, it will report the “LSeries Location Number” setup in the above steps. It’s a good way to make sure that a unique number really has been assigned to each LSeries device.

LanSchool Installation

Once a unique “LSeries Location Number” has been assigned to every LSeries device, it’s time to install the LanSchool Software. (If you are using X-Series devices, you do NOT need to assign any sort of “Location Number”.)

The LanSchool Software needs to be installed initially onto the nComputer host machine. The “host” is the physical machine which all NComputing devices will share. Login to the target computer with Administrator rights. Run the Setup.exe program from the LanSchool download or CDROM. Instructions for running Setup.exe are found in the Install.pdf document. Once the software has been installed onto the host, you can install it onto the NComputing clients by logging in with Administrator rights and running the same Setup.exe program, but on a client station instead of the host machine. Please note that you MUST be logged into the target machine with Administrator rights; merely specifying Administrator credentials in a Run-As dialog will not be sufficient.

Installation Shortcut

Once LanSchool has been installed onto the Host machine, you can install it onto the client devices as outlined above, or you can manually edit the LanSchool Configuration File. This file is located at C:\Program Files\LanSchool\LskTSDat.ini on the Host machine. There will be an entry for each Student and/or Teacher machine already installed. It’s a good idea to install at least one Student and use that entry in the configuration file as a pattern for the other students. The format of each new Student in the file is:

```
[LanSchool TSClient List]
LSeries#1=Student, Channel=2, Name=LSeries#1
LSeries#2=Student, Channel=2, Name=LSeries#2
LSeries#3=Student, Channel=2, Name=LSeries#3
```

The format for a Teacher is:

```
[LanSchool TSClient List]
LSeries#1=Teacher, Channel=2, Name=LSeries#1
...
LSeries#3=Student, Channel=2, Name=LSeries#2
```

In this example, “LSeries#1” is the Location Name. The number 1 was specified when you gave that machine a Location Name. The Name parameter can be used if you want a unique display name on the teacher console for that machine. If you know the Location Name for each machine (or the Station# for X-Series machines) you can easily configure an entire lab in a few minutes with Notepad. After configuring this file, the devices will have to login again to load the proper software.