

NComputing IP Utility (NIU) for vSpace™

Key features & benefits

- Create a virtual network adapter for each virtual desktop
- Associate a unique IP address with each user
- Isolate network traffic coming from each virtual desktop
- Assign IP addresses via DHCP
- Assign static IP addresses (X-series)
- Run security, tracking, and other IP-centric software in multiuser configurations

Overview

In an NComputing solution, multiple users share a single computer. They also normally share a single IP address. But some applications expect each user to have their own unique IP address and will not work properly if an IP address is shared. NIU solves this problem by giving each virtual desktop its own unique virtual network adapter and its own unique IP address. NIU works with NComputing L-series and X-series kits, and is easy to download, install and use.

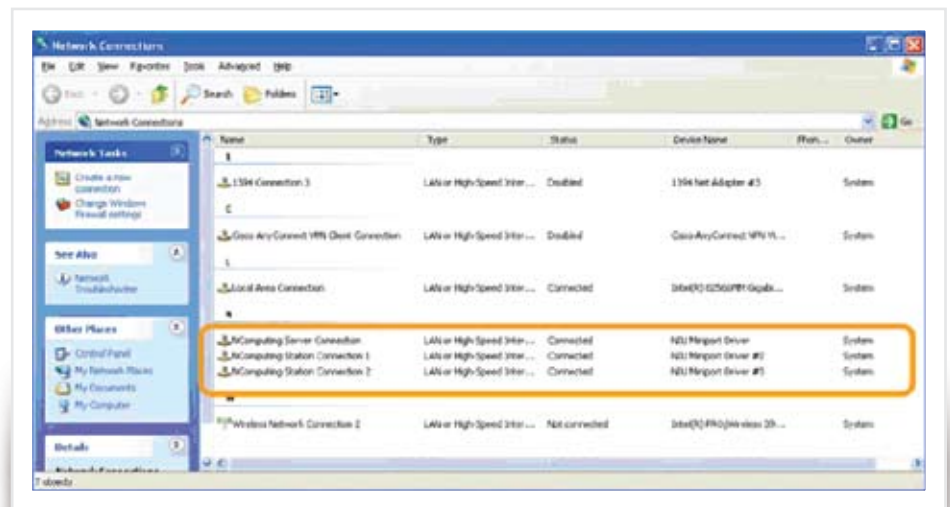
Example: track user network traffic by session

Many network analysis and diagnostic applications rely on their ability to identify the source of IP packets sent from a host computer. NIU enables such applications to work with vSpace by creating unique IP addresses for each user, just like the application expects.

One network interface for multiple IP addresses

All vSpace virtual desktop sessions use one *physical* network adapter on the shared computer. NIU dynamically assigns a new *virtual* network adapter to each vSpace session. Then, each virtual network adapter obtains its own unique real IP address.

From the network's point of view, each virtual desktop session (and the applications in each session) are different from the host's IP address. Each vSpace session is also network-isolated from all other sessions running on the same host. NIU virtual network adapters support all standard networking capabilities, including the ability for individual sessions to communicate via IP protocol with applications running inside other sessions on the host.



Control Panel Network Connections applet shows NIU virtual network adapters

Separate virtual network adapter configuration

You can easily see and manage the virtual network interfaces created by NIU in the standard Microsoft Windows Control Panel Network Connections applet.

And you can use the Windows network property controls to configure the virtual network adapters to use dynamic (DHCP) IP addresses (X-series and L-series) or static IP addresses (persistent on X-series only).

NIU console

The NIU add-on for vSpace includes an NIU console (separate from the vSpace Administration Console). The NIU console provides user state and session mapping information about the combined NIU and vSpace environment.

How to get NIU

NIU software and activation licenses are available online at www.ncomputing.com/niu.